

RELY FX™ SFFF Foam Fire Extinguisher Specification Sheet

The RELY FX 2.5-gallon Synthetic Fluorine-Free Foam (SFFF) extinguisher has been specifically designed to meet existing foam fire extinguisher performance standards and compliance-related objectives associated with UL, ULC, USCG, DOD, and NFPA regulations. Unlike other foam extinguishers currently available, this model contains an environmentally friendly SFFF foam agent solution that is PFAS (PFOS and PFOA) free. Additionally, the RELY FX NUFOAM® foam agent solution has a recommended 5-year life cycle to coincide with the extinguisher cylinders hydro test interval required by code, reducing periodic maintenance costs.



RELY FX Model P2.5SFFF

| | |
|-------------------------------|--|
| Part Number: | 10-30194 |
| Numerical Fire Rating: | 2A:10B |
| Agent Charge Capacity: | 2.5 gal (9L) NUFOAM® |
| Operating Pressure: | 100 psi (689 kPa) |
| Agent Discharge Rate: | 0.36 pp/s (0.16 kg/s) |
| Effective Discharge Duration: | 63 seconds |
| Effective Discharge Range: | 10-25 feet (3-7.6m) |
| Operating Temperature: | 35 to 120°F (1.6 to 49°C) |
| Total Charged Weight: | 29.6 lbs. (13.43 kg) |
| Total Height: | 24.5 in (62.2 cm) |
| Total Depth: | 7.13 in (18.1 cm) |
| Total Width: | 8.75 in (22.2 cm) |
| UL Listed and Labeled: | UL 8 and UL 711 standards |
| ULC Listed and Labeled: | S-554 and S-508 standards |
| Approval Agency File: | EX28874 |
| USCG References: | 46 CFR § 162.028 Type-A Size II / Type B:C Size II |
| DOT: | Meets 49 CFR requirements |
| Military Non-Magnetic: | Mil-E-24091C (pending) |
| US Navy Specification: | Mil-DTL-24652A (SH) (pending) |
| Advanced Vibration: | US Navy Mil-167-1 |
| Advanced Shock: | US Navy MIL-901E |
| Heavy Duty Brackets: | Black Mild Steel 81-681 Red Stainless Steel 81-682* |

*Red stainless-steel bracket required for USCG and Navy shipboard applications.

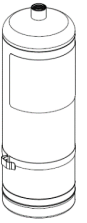
The new RELY FX™ P2.5SFFF foam extinguisher was designed to effectively address the extinguishment of both Class “A” and “B” types of fire situations by novice and professional operators with ease. Ideally suited for deployment in demanding environments including emergency response, military combat situations, and corrosive marine environments. This industrial foam extinguisher successfully demonstrated the additional extinguishment of many different types of flammable liquid fuels [see **RELY FX Bulletin PB102** for additional detail.] These extinguishers met rigorous operational vibration and shock tests generating impact forces up to 200 Gs to ensure structural and operational integrity under severe conditions.

The RELY FX™ P2.5SFFF foam model carries an extended five (5) year limited factory warranty.

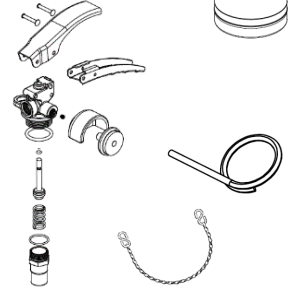
All information listed herein is subject to change.

RELY FX™ AFFF Foam Fire Extinguisher Model Hardware Features

Agent Cylinder: Full-length stainless-steel cylinder with a heavy-duty rolled bottom edge and indexed internal threaded collar eliminates installation orientation issues. External surface is finished with a red epoxy powder coating for added corrosion resistance and approval requirements. Cylinders meet 1,000-hour corrosion resistance exposure tests for offshore marine and USCG shipboard approval.

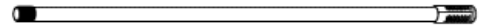


Valve Assembly: Heavy-duty nickel-plated forged brass valve assemblies feature heavy-duty protective gauge guards and an integrated hanger loop with stainless-steel hardware - operating lever, carry handle, rivets, and valve stem shafts.



Pull Pin and Retainer: Extra thick .175-inch (.44 cm) 316 stainless steel pull pin shaft with a large 1.52-inch (3.9 cm) inside diameter finger pull loop. Black retention tether (or optional stainless-steel retention chain) prevents loss of pull pin after use.

Internal Siphon Tube Assembly: Heavy-duty 304 stainless steel tube with welded bottom filter screen assembly.



Discharge Hose and Nozzle Assembly: Stainless steel threaded valve hex fitting connection, protective sleeve covered ferrule crimp, extended length 0.5-inch (1.3 cm) inside diameter discharge hose, and black anodized air-aspirating aluminum nozzle and barrel with port guard.



Hose Retainer Band: Heavy-duty 316 stainless steel .75-inch (1.9 cm) wide hose band and retainer assembly with threaded adjustment connection.

Nameplates: Large, field replaceable, 6 x 12-inch (15.2 x 30.5 cm) tri-lingual nameplates list extinguisher service information, contents, and illustrated operating instructions. Wrap around reflective SFFF FOAM label included for added agent identification and visibility in low light conditions

Factory Support and Training: Product service manuals and online factory training courses available to service companies and owners wishing to perform service work on RELY fire extinguisher models in accordance with NFPA-10. One-day onsite training and certification opportunities exist, see your RELY FX sales representative or contact RELY FX Customer service at FXsupport@relyinc.com.